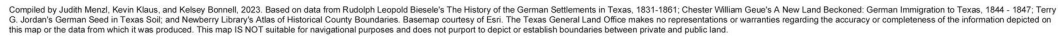
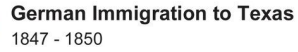




German Prisoners of War

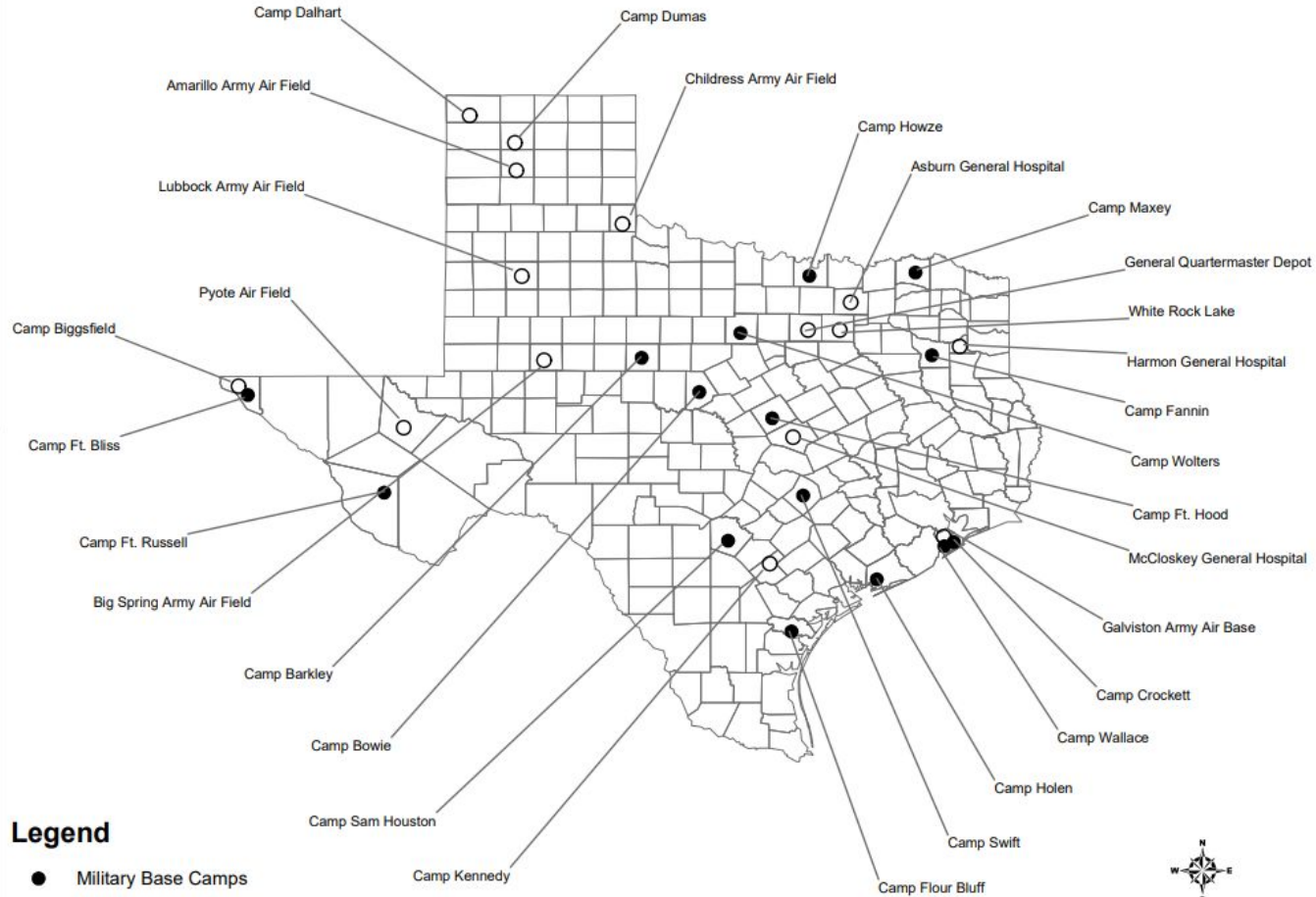
The Texas POW Experience

Presented by Erika Isham
Education and Engagement Coordinator, Fort Bend Museum

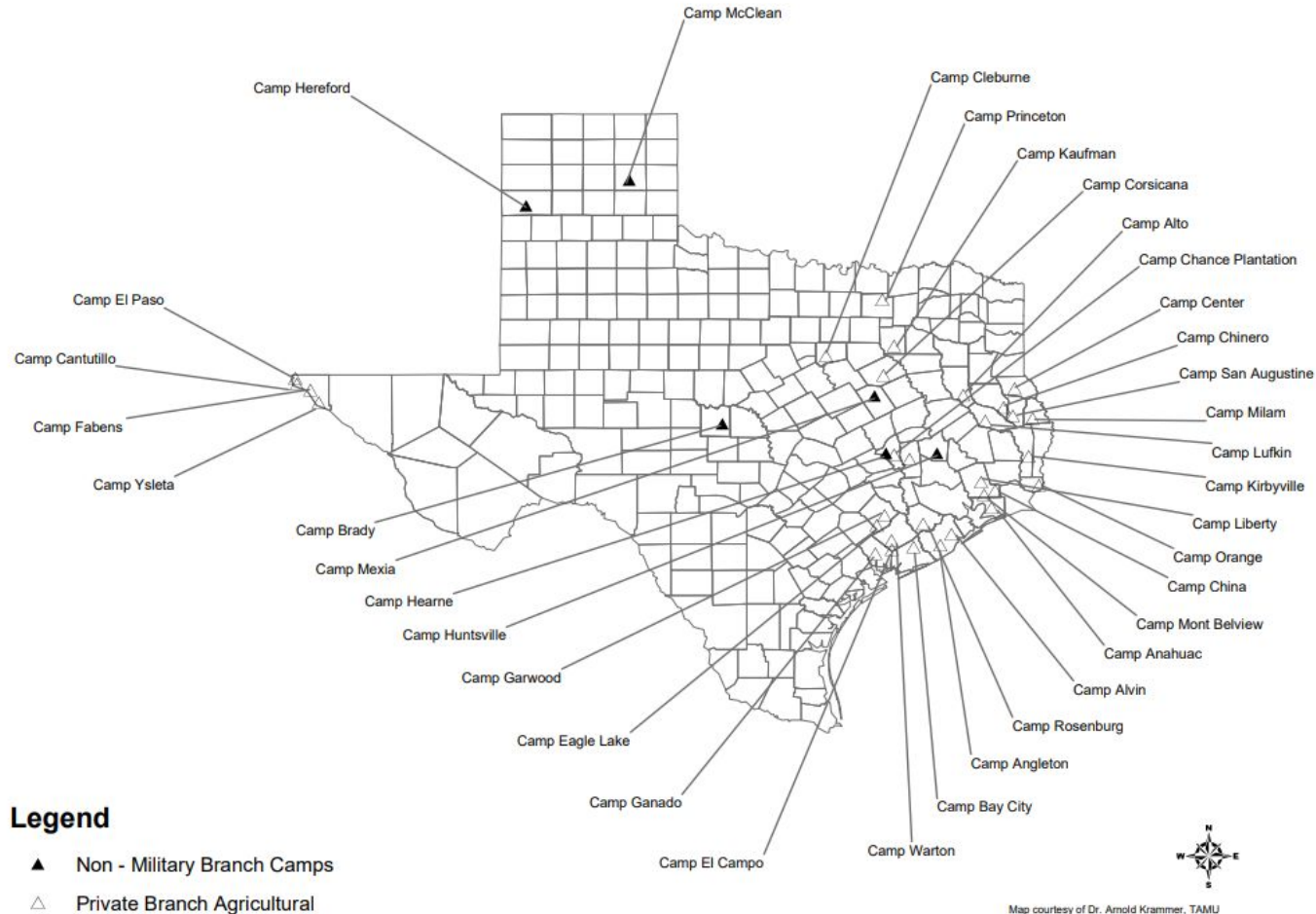


*Persons of German surname born in Europe whose children were born in Texas.

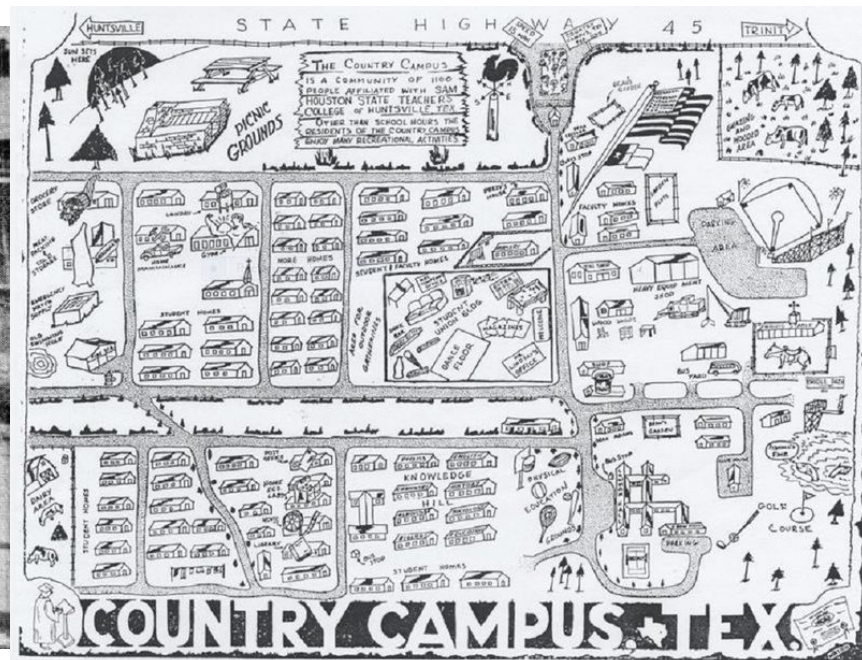
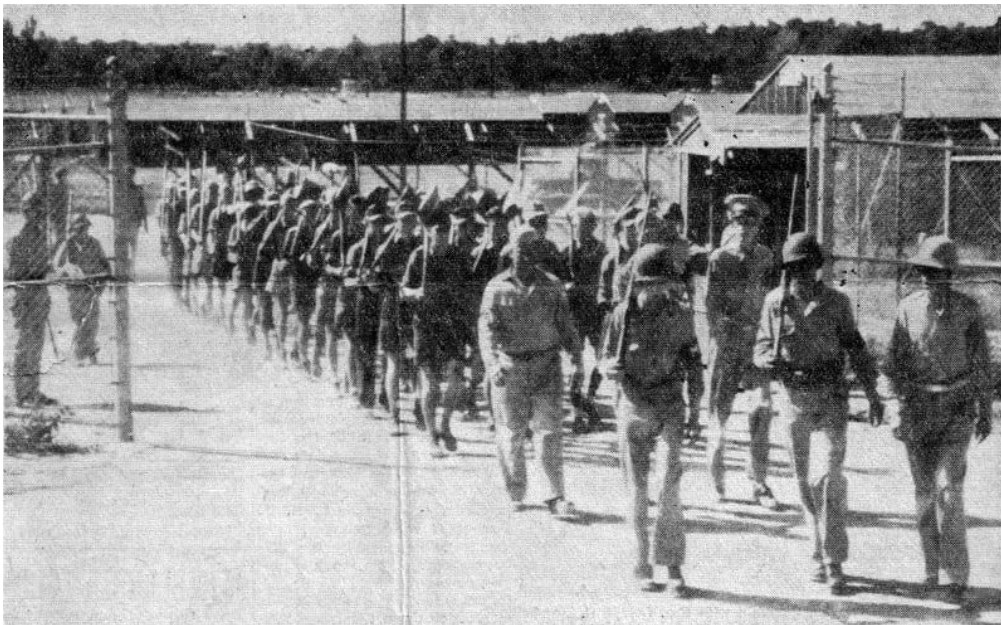
P.O.W. Camps of Texas



P.O.W. Camps of Texas



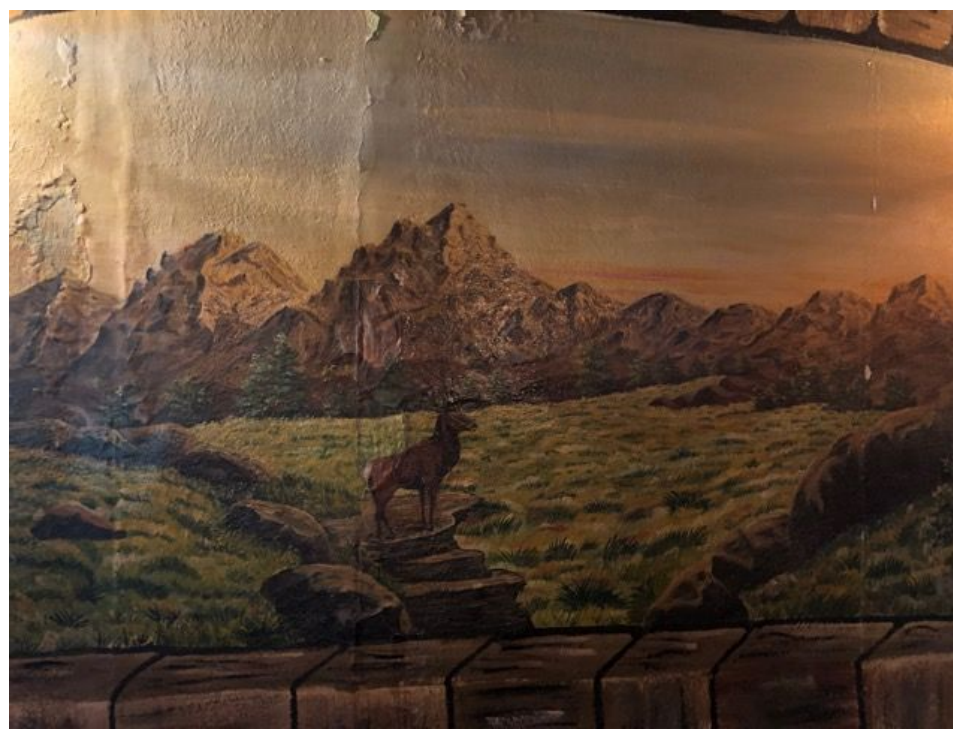
Country Campus, Texas





Camp Huntsville offered classes in American history, politics, literature, art and more to the German POWs. Here is an example of German re-education material: "The Growth of Democracy in Early America," from Wille und Weg (Will and Way), a POW newspaper.

Source: U.S. Army.



Painting of an elk as part of the mural in the Russell Room.
Courtesy Mike Zambrano, Jr.



Mural showing cowboys branding a calf. Courtesy Mike
Zambrano, Jr.

Building 98 - Marfa, Texas



Residents of Kenedy, TX waiting for the first train of internees.



New Arrivals to Kenedy Alien Detention Camp



Germans from South America
arriving at camp Kenedy



German repatriates checking
out at main gate of camp
Kenedy

POWs working in
the field
at the George Ranch



Rosenberg Camp



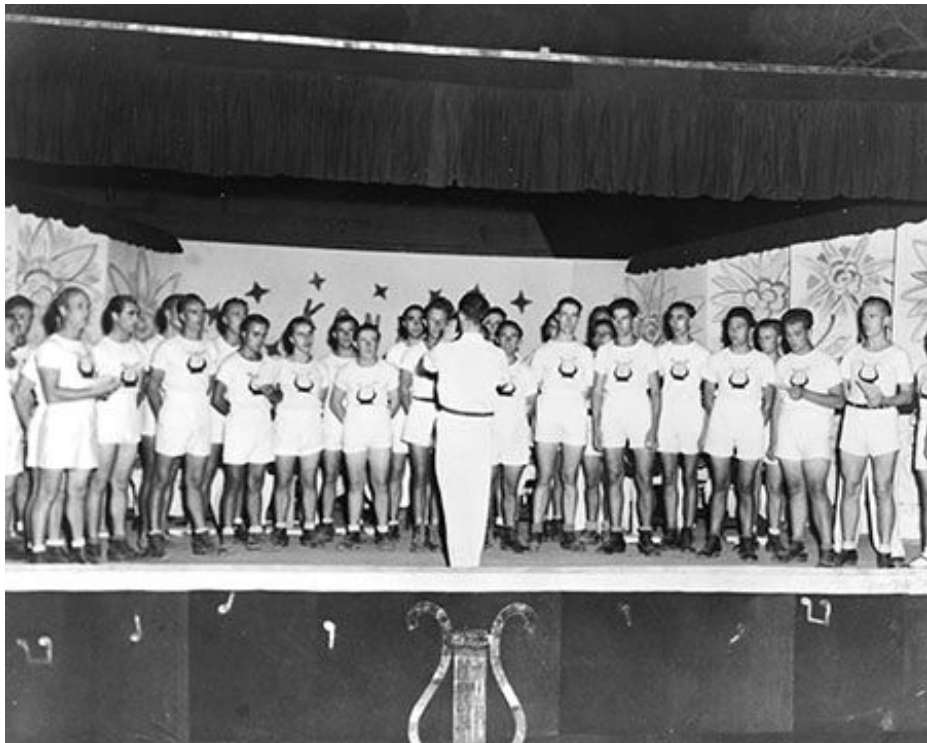
POWs working in the field at the George Ranch



Camp Hearne, one of the first and largest prisoner-of-war camps in the U.S., held more than 4,800 German POWs from 1943 to 1945.



The choral theater group comprised of prisoners of war at Camp Mexia. National Archives and Records Administration. Courtesy of Arnold Krammer.



Prisoners of war working for an olive company near Alvin, Texas. Courtesy of Arnold Krammer.



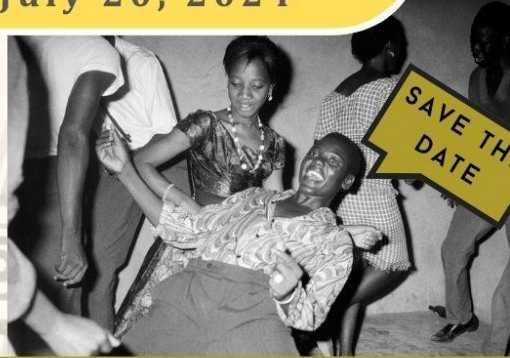
German POW's
being shown footage
of what was
happening in German
concentrations
camps.

Deutsche Kriegsgefangene in amerikanischen Lagern sehen den
Filmbericht über Deutsche Konzentrationslager

Sudeten Germans make their way to the railway station in Liberec, in former Czechoslovakia, to be transferred to Germany in this July 1946 photo. After the end of the war, millions of German nationals and ethnic Germans were forcibly expelled from both territory Germany had annexed and formerly German lands that were transferred to Poland and the Soviet Union. The estimated numbers of Germans involved ranges from 12 to 14 million, with a further estimate of 500,000 to 2 million dying during the expulsion.



**Festival of Cultures
July 20, 2024**



**SAVE THE
DATE**



**As an extension of our weekly summer history program,
join us in a rich cultural experience with interactive
exhibits, live performances, authentic cuisine, and
hands-on activities for visitors of all ages.**



**For more information visit
www.fortbendmuseum.org/summerhistory**